

梭動閥 Shuttle Valves.

- 閥系說明：鋼珠型。
Description : Ball Type.
- 額定流量 Flow rating Q nom. : 20 L/min
- 最高壓力 Max. pressure P max. : 315 bar.
- 插式閥重 Cartridge only weight : 0.12 kg.

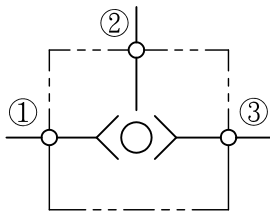
選購型號 Ordering Code

CAA - 063 - XXN

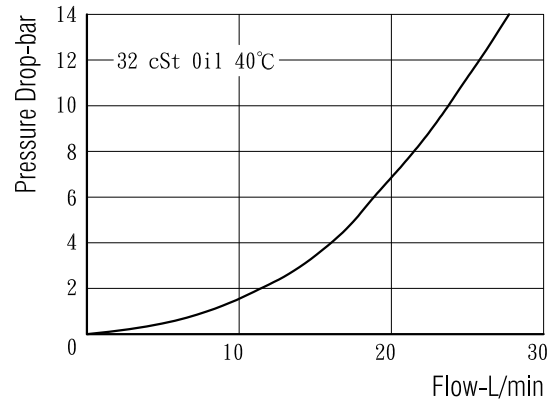
① ② ③ ④

- ① 梭動閥 Shuttle Valves.
- ② 閥孔型號 Cavity Size.
- ③ 控制方式 Controls.
XX - 標準型. Standard Type.
VX - 附外部導壓口. With external pilot port.
- ④ 油封材質 Seals : N - 丁腈橡膠. Buna N.
V - 氟橡膠. Viton.

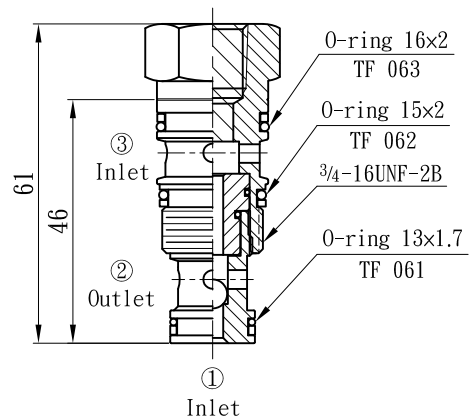
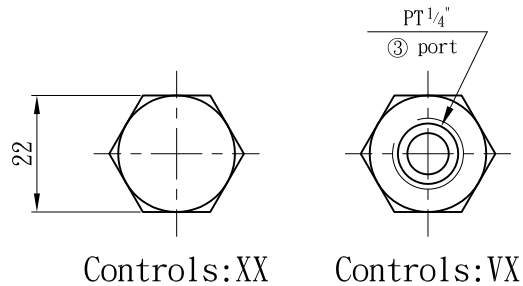
油壓符號 Symbol



壓損曲線 Flow-Pres. Drop Curve



插閥尺寸 Dimensions(mm)



閥孔型號 Valve Cavity : C063

成型刀具 Cavity Tools : CTD6-D, CTD6-R

※請參閱 See page CT. H