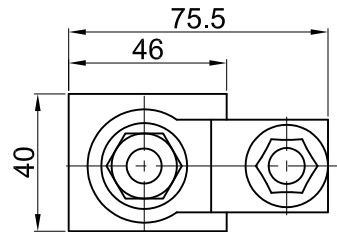
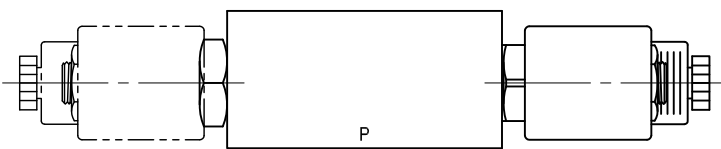
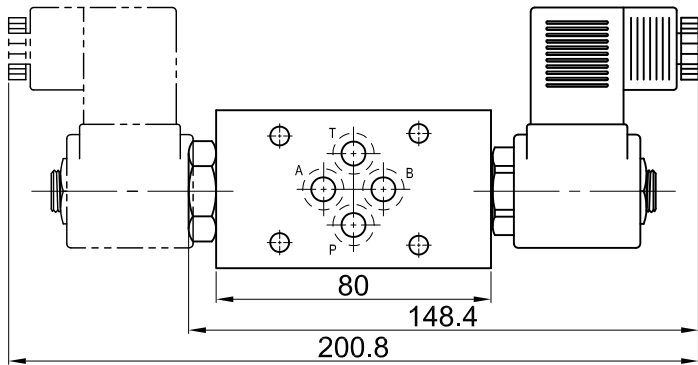


# 疊式電磁閥 Solenoid Control Sandwich Valves.

## 疊式閥體 Sandwich Bodies.

Code	Control Port	Weight
MPI-C28-P02M-L	P	0.68 kg.
MPI-C28-A02M-I	A	0.94 kg.
MPI-C28-B02M-I	B	0.94 kg.
MPI-C282-W02M-I	A & B	0.89 kg.

閥體材質：展性鑄鐵  
Body Material: SG Iron.



## 選購型號 Ordering Code

SV08-20-A 02M-C1

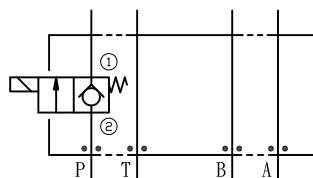
①                      ②                      ③                      ④

① 電磁閥規格  
Solenoid Valves Model.

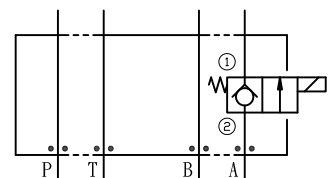
③ 疊式閥規格  
Sandwich Valves Model.  
ISO 03 / CETOP 3.

④ 線圈電壓別  
Coil Voltage  
C1/C2 — 115VAC/230VAC  
D1/D2 — 12VDC/24VDC

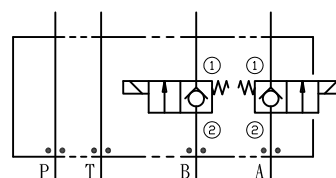
② 控制孔口 Control port.



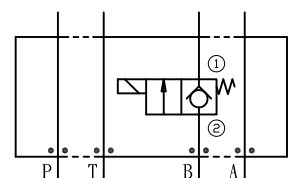
Control port P



Control port A



Control port W (A & B)



Control port B