

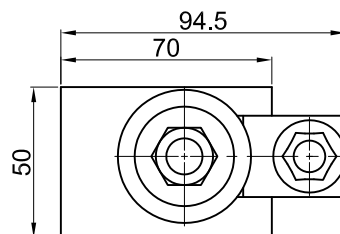
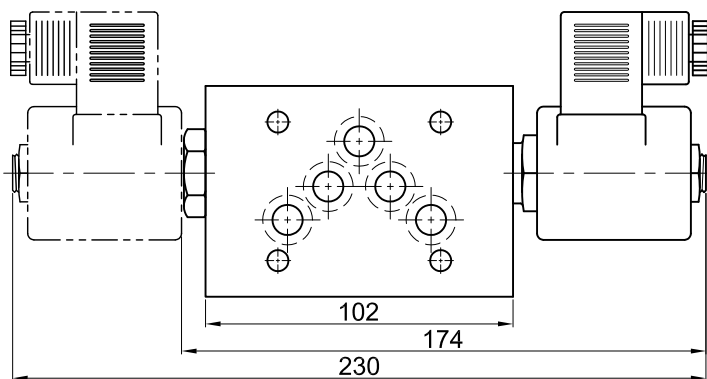
疊式電磁閥 Solenoid Control Sandwich Valves.

疊式閥體 Sandwich Bodies.

| Code | Control Port | Weight |
|-----------------|--------------|----------|
| MPI-C20-P03M-L | P | 2.80 kg. |
| MPI-C20-A03M-I | A | 2.30 kg. |
| MPI-C20-B03M-I | B | 2.30 kg. |
| MPI-C202-W03M-I | A & B | 2.70 kg. |

閥體材質：展性鑄鐵

Body Material : SG Iron.



選購型號 Ordering Code

SV10-20-A 03M-C1

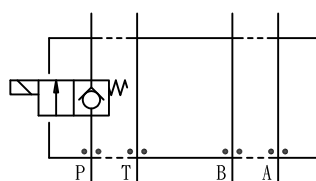
① ② ③ ④

① 電磁閥規格
Solenoid Valves Model.

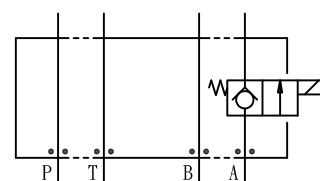
③ 疊式閥規格
Sandwich Valves Model.
ISO 05 / CETOP 5.

④ 線圈電壓別
Coil Voltage
C1/C2 — 115VAC/230VAC
D1/D2 — 12VDC/24VDC

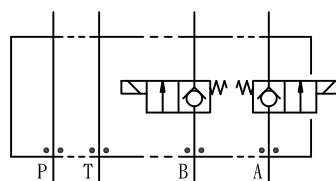
② 控制孔口 Control port.



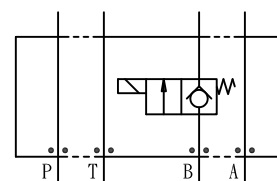
Control port P



Control port A



Control port W (A & B)



Control port B