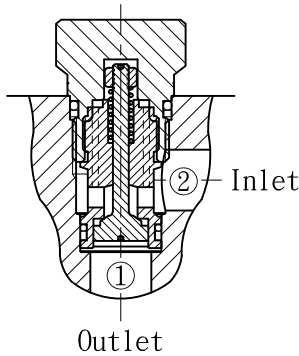
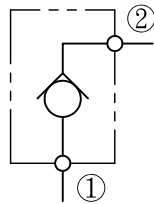


止回閥 Check Valves.

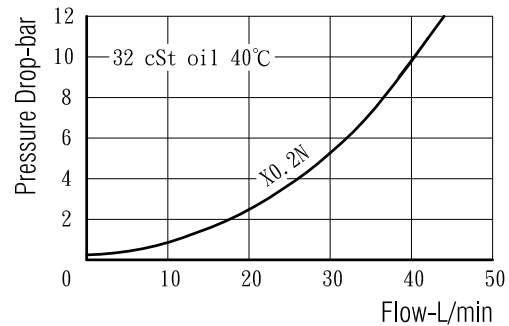


油壓符號 Symbol



- 閥系說明：提塞式，自由流由閥口②至閥口①。
Description : Poppet type, Free flow from port ② to port ①.
- 額定流量 Flow rating Q nom. : 25 L/min
- 最高壓力 Max. pressure P max. : 250 bar.
- 插式閥重 Cartridge only weight : 0.06 kg.

壓損曲線 Flow-Pres. Drop Curve



閥孔型號 Valve Cavity : C062
 成型刀具 Cavity Tools : CTS6-D, CTS6-R
 ※請參閱 See page CT.G

選購型號 Ordering Code

CCL - 062 - X 0.2 N
 ① ② ③ ④ ⑤

- ① 止回閥
Check Valves.
- ② 閥孔型號
Cavity Size.
- ③ 控制方式 Controls.
X - 不可調整. Non - Adjustable.
- ④ 開閥壓
Cracking Pressure.
0.2 - 0.2 bar.
1.0 - 1.0 bar.
- ⑤ 油封材質
Seals : N - 丁腈橡膠. Buna N.
V - 氟橡膠. Viton.

插閥尺寸 Dimensions (mm)

