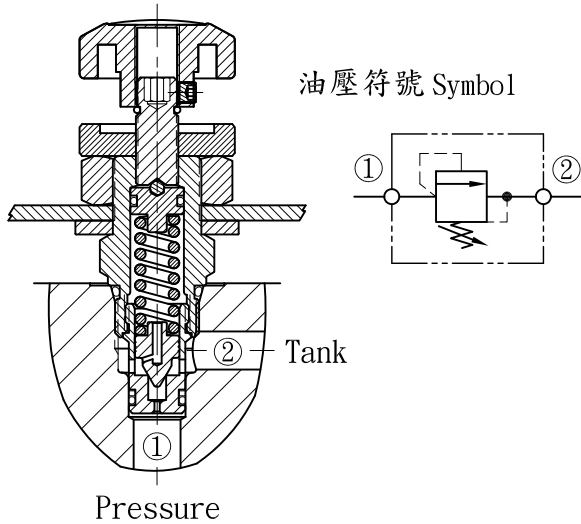


洩壓閥 Relief Valves - Remote Control.



• 閥系說明：提塞式，直動型。

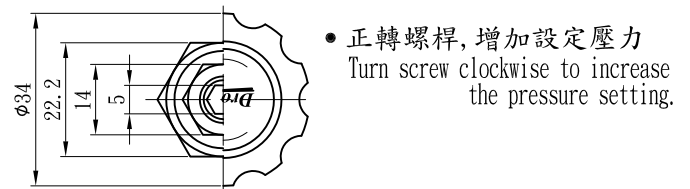
Description : Poppet Type, Direct acting.

• 額定流量 Flow rating Q nom. : 2.0 L/min.

• 最高壓力 Max. pressure P max. : 400 bar.

• 插式閥重 Cartridge only weight :
L - 0.10 kg.
K - 0.13 kg.
PK - 0.19 kg.

插閥尺寸 Dimensions (mm)



閥孔型號 Valve Cavity : C082

成型刀具 Cavity Tools : CT28-D, CT28-R

※請參閱 See page CT. A

選購型號 Ordering Code

CMD - 082 - L 10 N

① ② ③ ④ ⑤

① 洩壓閥 - 遙控型

Relief Valves - Remote Control.

② 閥孔型號

Cavity Size.

③ 調整方式 Controls.

L - 螺桿調整. Standard Screw Adjustment.

K - 旋鈕調整. Handknob & Locknob Adj.

PK - 面板固定型，旋鈕調整.
Handknob with Panel Mount.

④ 調壓範圍

Adjustment Ranges.

03 - 2 to 30 bar. (*10bar)

10 - 3 to 100 bar. (*30bar)

20 - 10 to 210 bar. (*70bar)

30 - 20 to 315 bar. (*70bar)

40 - 30 to 400 bar. (*70bar)

(*) 出廠設定壓力. Standard Setting.

⑤ 油封材質

Seals : N - 丁腈橡膠. Buna N.

V - 氟橡膠. Viton.

