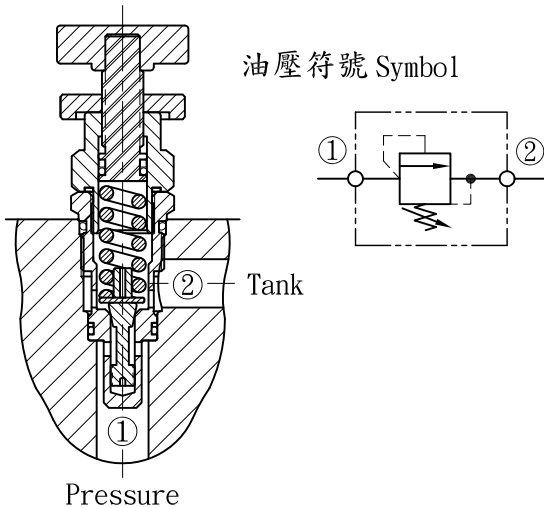
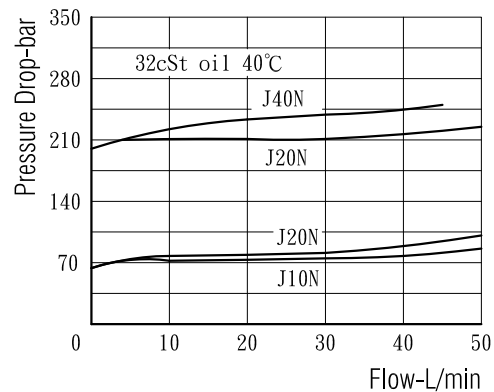


# 洩壓閥 Relief Valves



- 閥系說明：直動型，導引提塞式。  
Description : Direct acting, Guided poppet type.
- 額定流量 Flow rating Q nom. : 50 L/min.
- 最高壓力 Max. pressure P max. : 400 bar.
- 插式閥重 Cartridge only weight : K - 0.16 kg.  
L - 0.31 kg.

## 壓損曲線 Flow-Pres. Drop Curve



閥孔型號 Valve Cavity : C092  
成型刀具 Cavity Tools : CT29-D, CT29-R

※請參閱 See page CT. I

## 選購型號 Ordering Code

CMR - 092 - J 40 N  
①            ②            ③ ④ ⑤

- ① 洩壓閥  
Relief Valves.
- ② 閥孔型號  
Cavity Size.
- ③ 調整方式 Controls.  
J - 帽封內藏調整。  
Capped Screw Adjustment.  
KW - 大型旋鈕調整。  
Handknob & Locknob Adj.
- ④ 調壓範圍  
Adjustment Ranges.  
10 - 5 to 100 bar. (\*10bar)  
20 - 40 to 210 bar. (\*30bar)  
40 - 110 to 400 bar. J Only (\*70bar)  
(\* )出廠設定壓力. Standard Setting.
- ⑤ 油封材質  
Seals : N - 丁腈橡膠. Buna N.  
V - 氟橡膠. Viton.

## 插閥尺寸 Dimensions (mm)

