

減壓閥 Reducing Valves.

- 閥系說明：導壓型，平衡活塞式。
Description : Pilot operated, Balanced spool.
- 額定流量 Flow rating Q_{nom.}: 60 L/min.
- 最高壓力 Max. pressure P_{max.}: 315 bar.
- 插式閥重 Cartridge only weight : K - 0.29 kg.
L - 0.25 kg.

選購型號 Ordering Code

CRD - T02 - L10N

① ② ③ ④ ⑤

① 減壓閥

Reducing Valves.

② 閥孔型號

Cavity Size.

③ 調整方式 Controls.

L - 螺桿調整. Standard Screw Adjustment
K - 旋鈕調整. Handknob & Locknob Adj.

④ 壓力調整範圍

Adjustment Ranges.

03 - 2.0 to 30 bar. (*10bar)

10 - 5.0 to 100 bar. (*15bar)

20 - 7.0 to 210 bar. (*30bar)

30 - 10 to 315 bar. (*30bar)

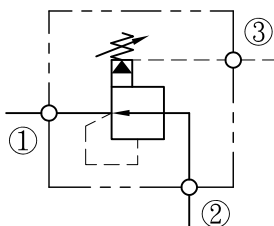
(*)出廠設定壓力. Standard Setting.

⑤ 油封材質

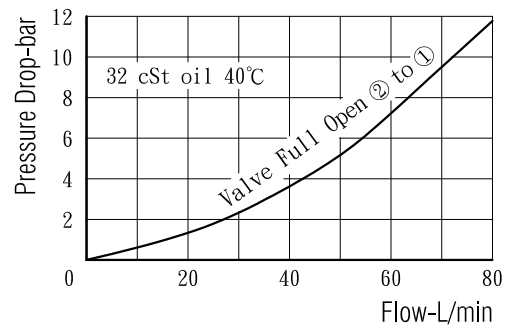
Seals : N - 丁腈橡膠. Buna N.

V - 氟橡膠. Viton.

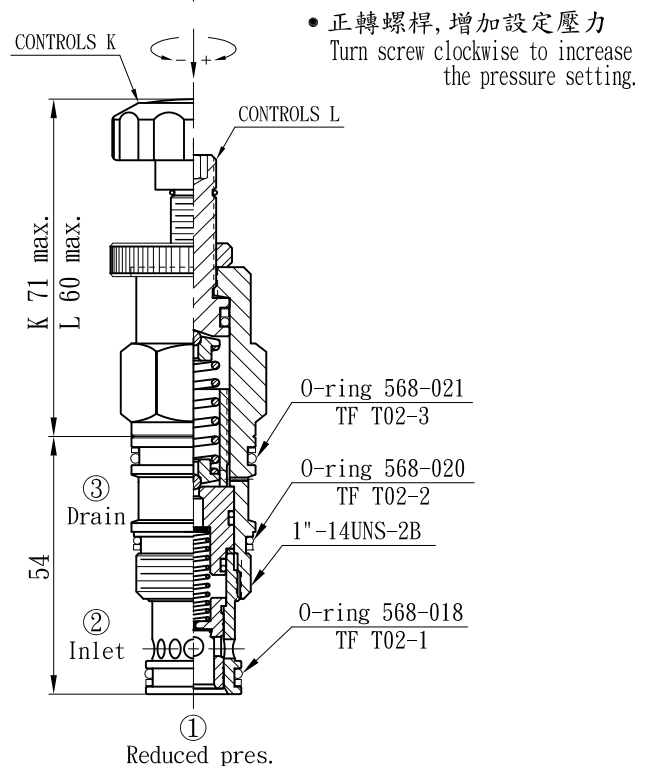
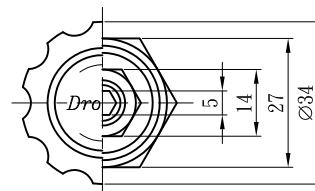
油壓符號 Symbol



壓損曲線 Flow-Pres. Drop Curve



插閥尺寸 Dimensions(mm)



- 正轉螺桿，增加設定壓力
Turn screw clockwise to increase the pressure setting.

閥孔型號 Valve Cavity : T02

成型刀具 Cavity Tools : CT02-D, CT02-R

※請參閱 See page

CT.L

INDEX