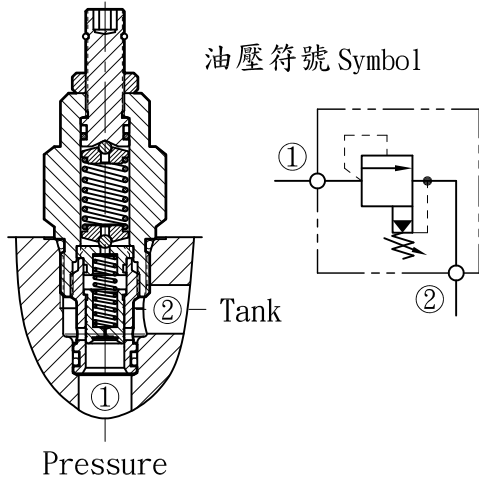
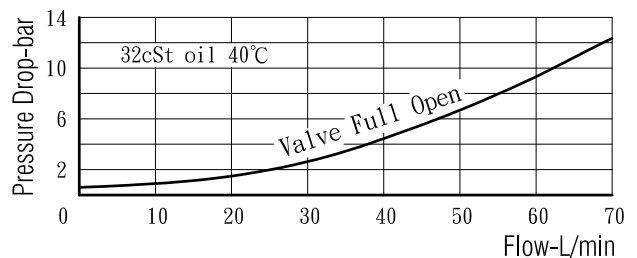


# 洩壓閥 快速反應型 Relief Valves - Rapid Response.



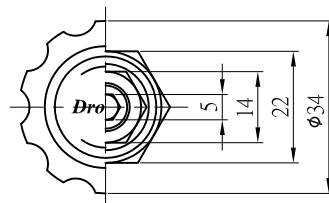
- 閥系說明：導壓操作，快速反應型。  
Description : Pilot operated, Rapid response.
- 額定流量 Flow rating Q nom. : 60 L/min.
- 最高壓力 Max. pressure P max. : 315 bar.
- 插式閥重 Cartridge only weight : K - 0.16 kg.  
L - 0.13 kg.

## 壓損曲線 Flow-Pres. Drop Curve



閥孔型號 Valve Cavity : C062  
 成型刀具 Cavity Tools : CTS6-D, CTS6-R  
 ※請參閱 See page CT.G

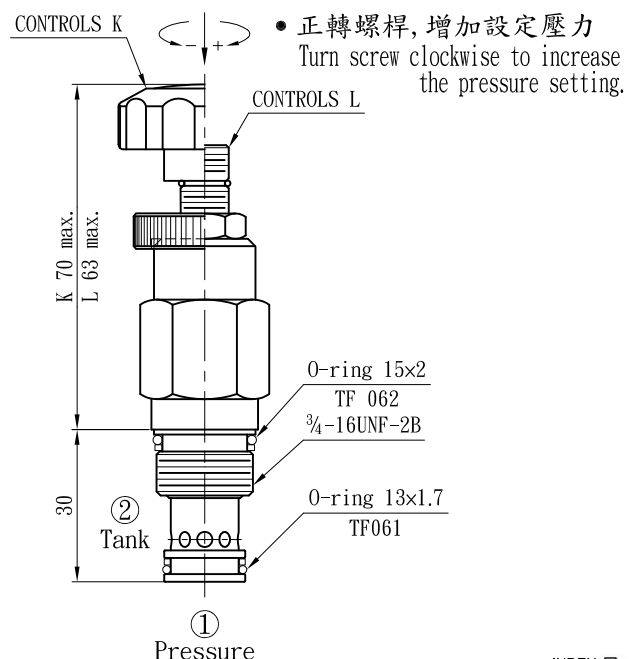
## 插閥尺寸 Dimensions (mm)



## 選購型號 Ordering Code

**CRQ - 062 - L10N**

- ① 洩壓閥 - 快速反應型  
Relief Valves - Rapid Response.
- ② 閥孔型號  
Cavity Size.
- ③ 調整方式 Controls.  
L - 螺桿調整. Standard Screw Adjustment.  
K - 旋鈕調整. Handknob & Locknob Adj.
- ④ 調壓範圍  
Adjustment Ranges.  
10 - 5 to 100 bar. (\*30bar)  
20 - 7 to 210 bar. (\*70bar)  
30 - 10 to 315 bar. (\*70bar)  
(\* )出廠設定壓力. Standard Setting.
- ⑤ 油封材質  
Seals : N - 丁腈橡膠. Buna N.  
V - 氟橡膠. Viton.



註：此閥不適用於連續達操作壓的作業。  
 NOTE : THESE VALVES ARE NOT DESIGNED FOR CONTINUOUS DUTY APPLICATIONS.

• Drotrol 工業用油壓插式閥 Industrial Hydraulic Valves.