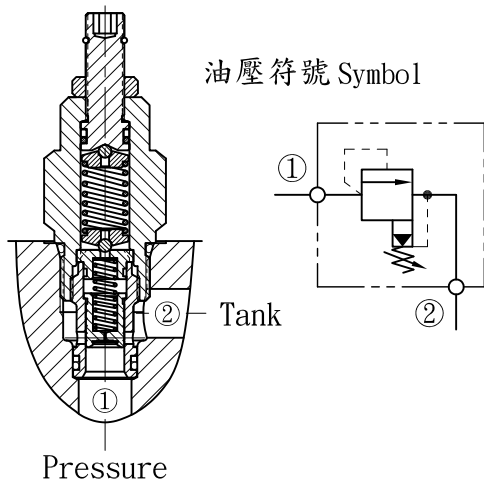


洩壓閥 Relief Valves

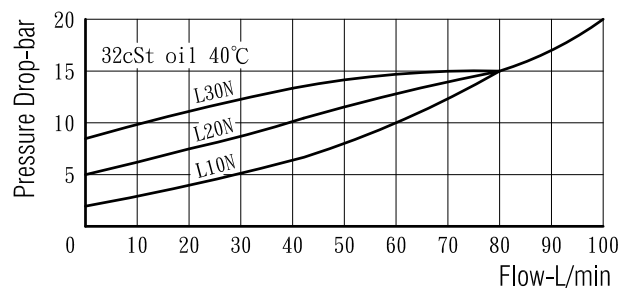


閥孔型號 Valve Cavity : C102
成型刀具 Cavity Tools : CT20-D, CT20-R

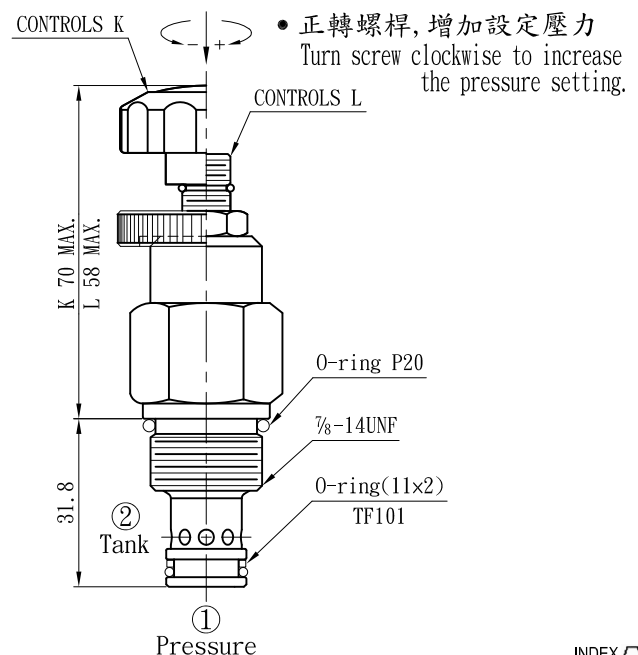
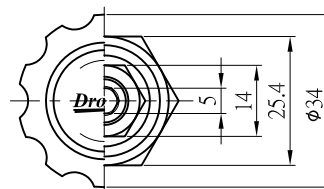
※請參閱 See page CT. B

- 閥系說明 : 平衡活塞, 導壓操作.
Description : Balanced spool, Pilot operated.
- 額定流量 Flow rating Q nom. : 80 L/min.
- 最高壓力 Max. pressure P max. : 315 bar.
- 插式閥重 Cartridge only weight : K - 0.21 kg.
L - 0.16 kg.

壓損曲線 Flow-Pres. Drop Curve



插閥尺寸 Dimensions (mm)



選購型號 Ordering Code

CRV - 102 - L10N

① ② ③ ④ ⑤

- ① 洩壓閥
Relief Valves.
- ② 閥孔型號
Cavity Size.
- ③ 調整方式 Controls.
L - 螺桿調整. Standard Screw Adjustment
K - 旋鈕調整. Handknob & Locknob Adj.
- ④ 調壓範圍
Adjustment Ranges.
10 - 5 to 100 bar. (*30bar)
20 - 7 to 210 bar. (*70bar)
30 - 10 to 315 bar. (*70bar)
(*) 出廠設定壓力. Standard Setting.
- ⑤ 油封材質
Seals : N - 丁腈橡膠. Buna N.
V - 氟橡膠. Viton.