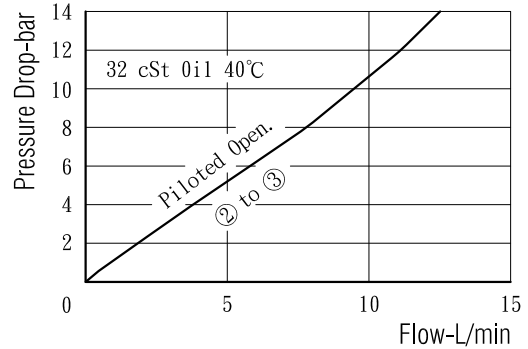


## 順序閥-外導型 Sequence Valves - Ext. Pilot, Int. Drain

- 閥系說明：外導型, 平衡滑栓式。  
Description : External pilot operated, Blanced spool.
- 額定流量 Flow rating Q nom. : 10 L/min
- 最高壓力 Max. pressure P max. : 315 bar.
- 插式閥重 Cartridge only weight : K - 0.17 kg.  
L - 0.14 kg.

## 壓損曲線 Flow-Pres. Drop Curve



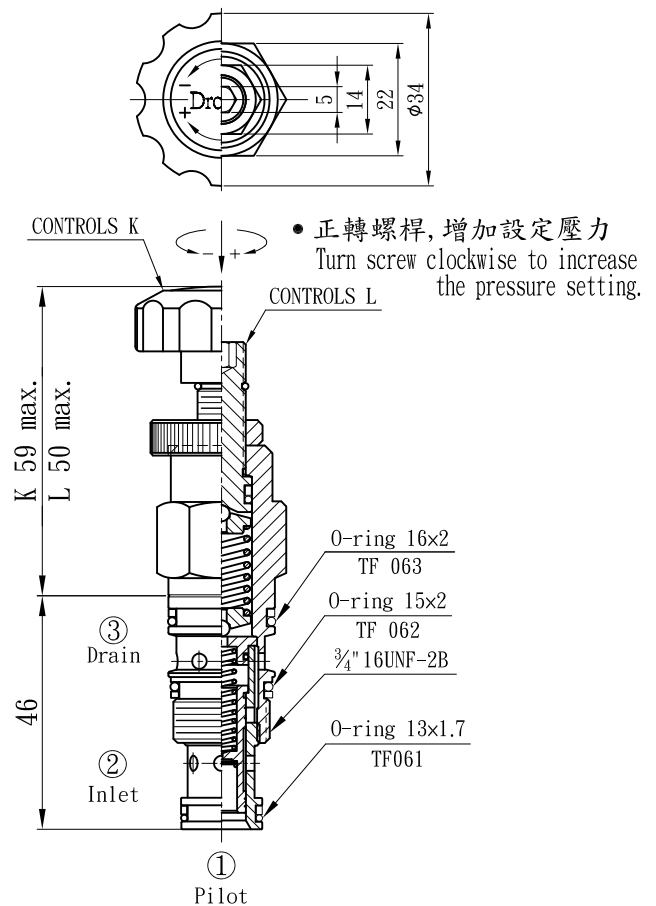
## 選購型號 Ordering Code

**CS1 - 063 - L10N**

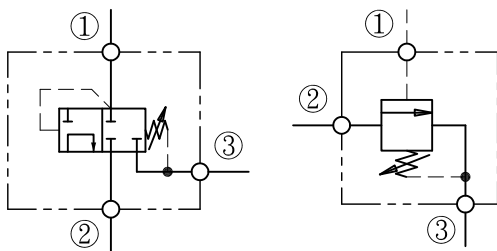
①                      ②                      ③                      ④                      ⑤

- ① 順序閥 - 外導壓, 內排油型  
Sequence Valves - Ext. Pilot, Int. Drain
- ② 閥孔型號  
Cavity Size.
- ③ 調整方式 Controls.  
L - 螺桿調整. Standard Screw Adjustment  
K - 旋鈕調整. Handknob & Locknob Adj.
- ④ 壓力調整範圍  
Adjustment Ranges.  
10 - 5 to 100 bar. (\*30bar)  
20 - 7 to 210 bar. (\*70bar)  
(\* )出廠設定壓力. Standard Setting.
- ⑤ 油封材質  
Seals : N - 丁腈橡膠. Buna N.  
V - 氟橡膠. Viton.

## 插閥尺寸 Dimensions(mm)



## 油壓符號 Symbol



閥孔型號 Valve Cavity : C063

成型刀具 Cavity Tools : CTD6-D, CTD6-R

※請參閱 See page CT. H