

順序閥 Sequence Valves.

- 閥系說明：導壓型，平衡活塞式。
Description : Pilot operated, Balanced spool.
- 額定流量 Flow rating $Q_{nom.} : 100 \text{ L/min.}$
- 最高壓力 Max. pressure $P_{max.} : 315 \text{ bar.}$
- 插式閥重 Cartridge only weight : K - 0.29 kg.
L - 0.25 kg.

選購型號 Ordering Code

CSV - 093 - L 10 N

① ② ③ ④ ⑤

① 順序閥

Sequence Valves.

② 閥孔型號

Cavity Size.

③ 調整方式 Controls.

L - 螺桿調整. Standard Screw Adjustment
K - 旋鈕調整. Handknob & Locknob Adj.

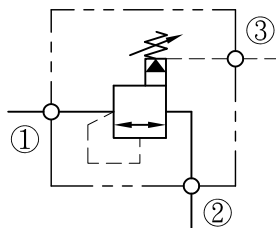
④ 壓力調整範圍

Adjustment Ranges.
10 - 5 to 100 bar. (*30bar)
20 - 7 to 210 bar. (*70bar)
(*)出廠設定壓力. Standard Setting.

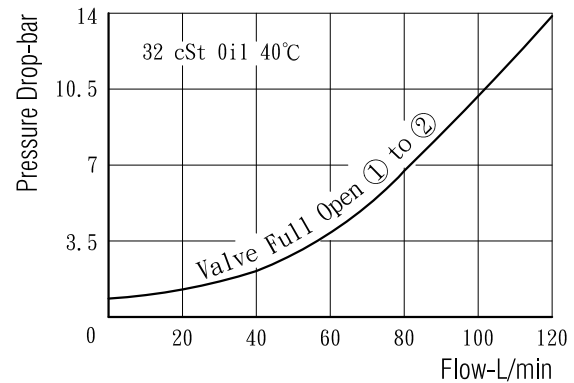
⑤ 油封材質

Seals : N - 丁腈橡膠. Buna N.
V - 氟橡膠. Viton.

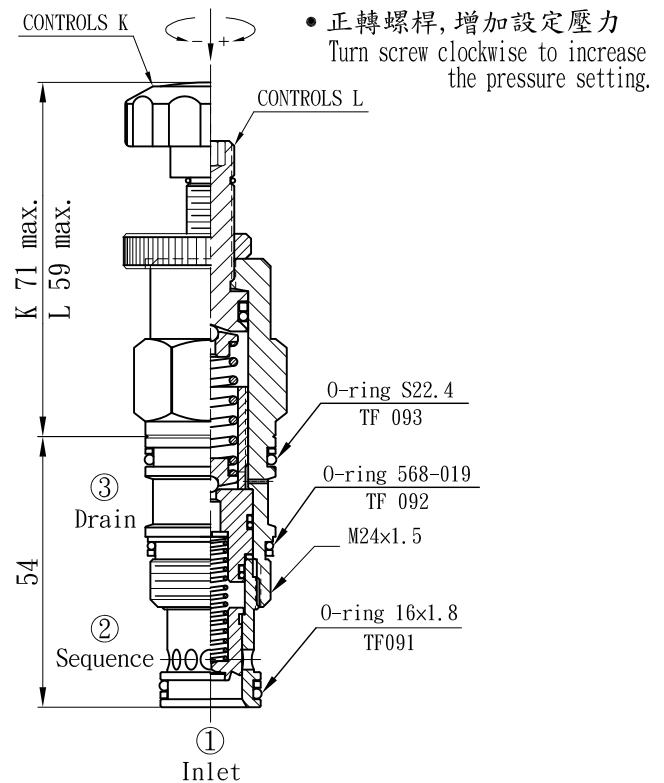
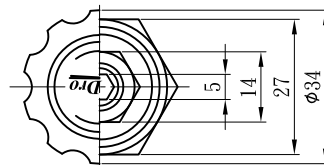
油壓符號 Symbol



壓損曲線 Flow-Pres. Drop Curve



插閥尺寸 Dimensions(mm)



閥孔型號 Valve Cavity : C093

成型刀具 Cavity Tools : CT39-D, CT39-R

※請參閱 See page

CT. J

INDEX