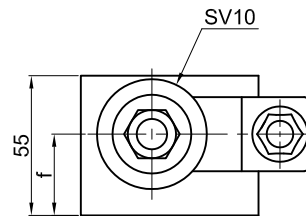
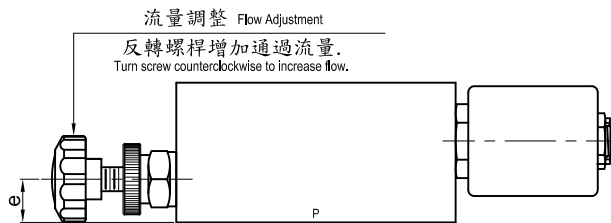
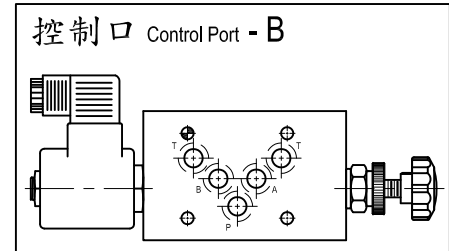
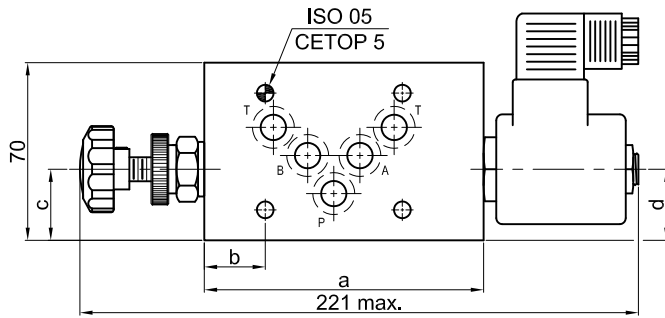


## 疊式減加速閥 — 電磁閥操作式

Flow Control Sandwich Valves - Solenoid Operated.



尺寸 Dimensions(mm)

控制口 Cont. Port	a	b	c	d	e	f	重量 Weight
P03M	110	26	28	28	17	32	3.25 kg/1ea.
T03M	110	26	45	45	27	27	
B03M	110	28	28	28	37	37	
A03M	110	28	28	28	37	37	

表 I Table I

型號 Code	電壓 Voltage
C2	230VAC
C1	115VAC
D2	24VDC
D1	12VDC

## 選購型號 Ordering Code.

**DA-100 FV-P 03M-C2**

① ② ③ ④ ⑤ ⑥

① 減加(加減)速閥

Flow Control Valves-Solenoid Operated.

② 電磁閥型式別(請參閱表B)

Solenoid Valves Model.

(See Table B, Page DA-03-03.)

③ 流量調整範圍 Flow Ranges.

FV : 0 ~ 30 *l.p.m*

(插式閥CNV-082, 請參閱8.02頁)

FS : 0 ~ 10 *l.p.m*

(插式閥CNS-082, 請參閱8.01頁)

FF : 0 ~ 5 *l.p.m*

(插式閥CNF-082, 請參閱8.01A頁)

④ 控制閥口(P, T, B, A)

Control Port.(P,T,B,A)

⑤ 疊式閥規格

Sandwich Valves Model.(ISO 05/CETOP 5)

⑥ 線圈電壓別(請參閱表 I)

Coil Voltage.(See Table I)