

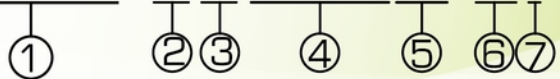
DNM

油電壓力開關 Pressure Switch



選購型號 / How to order

DNM-2P250A-Pi



1 型式 / Model

壓力直讀式·疊加式
Direct Read-out.Sandwich Type

2 配合閥規格 / For use with solenoid valves



3 壓力檢出管路 / Pressure Transforms Line

A:A port
B:B port
P:P port
w:A&B port

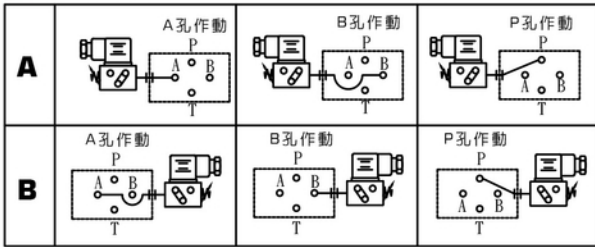
4 壓力範圍 / Pressure Adj. Range

型式 Model	壓力調整範圍 Pressure Adj. Range bar	測定壓力 Set Pres. bar
040K	6 ~ 40	20
070K	8 ~ 70	30
150K	15 ~ 150	70
250K	40 ~ 250	100
360K	50 ~ 360	200

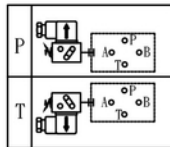
7 B:無指示燈 / **Without indicator LED**

i:附指示燈 / **With indicator LED**

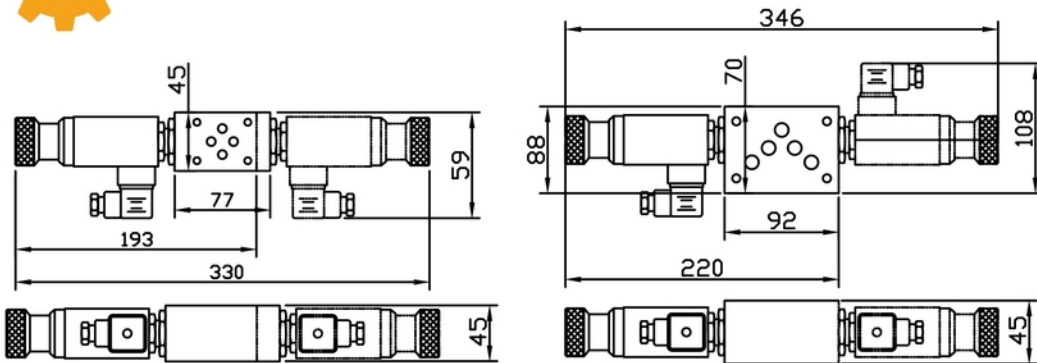
5 調壓向位 / Position of the pressure adj.



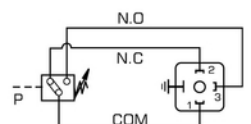
6 電器插頭座位 / Position of the electrical connector



尺寸圖 / Dimension mm(inches)



油電符號表 / Graphic Symbol



N.O.=Normally open
N.C.=Normally close

Rating:
B:3A 250VAC, 0.5A 30VDC
i:24DC, 250VAC<0.8A

型式 Model	重量 kg Weight
DNM-02P(A,B)	2.1 Kgs
DNM-02W	3.1 Kgs

For use with ISO 03/CETOP 3/NFPA D03
Standard Solenoid Valves

型式 Model	重量 kg Weight
DNM-03 (A,B)	3.1 Kgs
DNM-03W	4.1 Kgs

For use ISO 05/CETOP 5/NFPA D05
Standard Solenoid Valves



性能圖 / Performance Curves

性能圖請參考DNA系列
See Table DNA Series