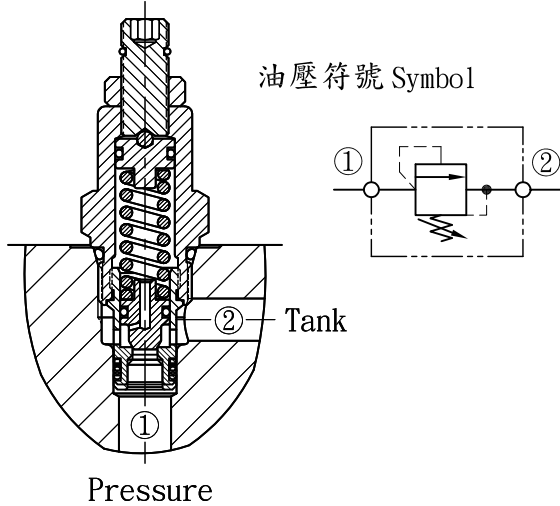
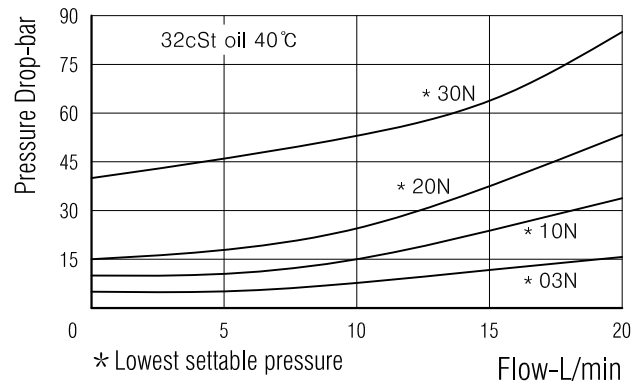


洩壓閥 Relief Valves - Direct acting.



- 閥系說明：提塞式，直動型。
Description : Poppet Type, Direct acting.
- 額定流量 Flow rating Q nom. : 20 L/min
- 最高壓力 Max. pressure P max. : 315 bar.
- 插式閥重 Cartridge only weight : K - 0.13 kg.
L - 0.10 kg.

壓損曲線 Flow-Pres. Drop Curve



閥孔型號 Valve Cavity : C082
成型刀具 Cavity Tools : CT28-D, CT28-R

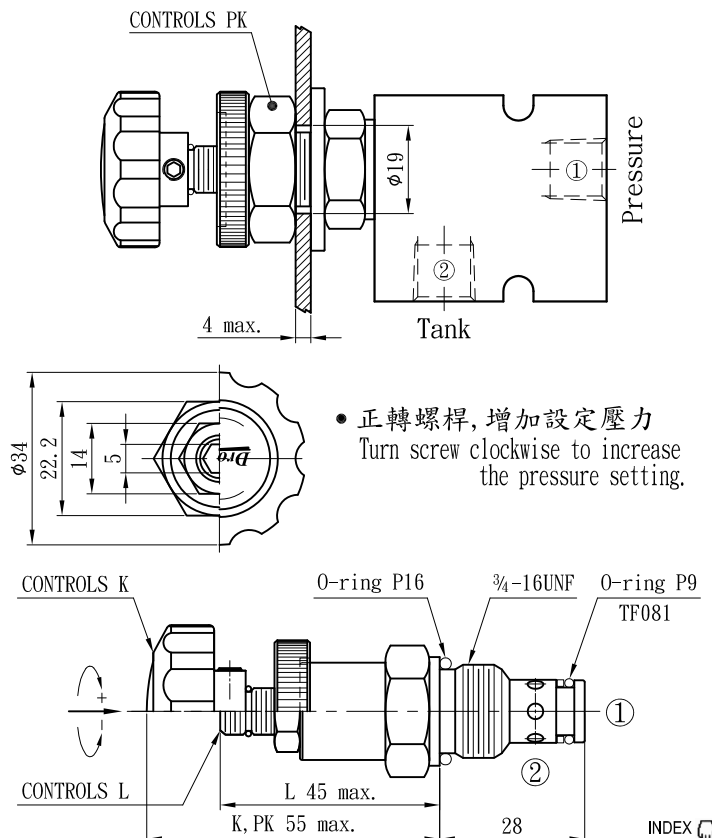
※請參閱 See page CT. A

選購型號 Ordering Code

CMR - 082 - L 10 N

- ① 洩壓閥 - 直動型
Relief Valves - Direct acting.
- ② 閥孔型號
Cavity Size.
- ③ 調整方式 Controls.
L - 螺桿調整. Standard Screw Adjustment.
K - 旋鈕調整. Handknob & Locknob Adj.
PK - 面板固定型, 旋鈕調整.
Handknob with Panel Mount.
- ④ 調壓範圍
Adjustment Ranges.
03 - 4 to 28 bar. (*10bar)
10 - 9 to 100 bar. (*30bar)
20 - 25 to 210 bar. (*70bar)
30 - 40 to 315 bar. (*70bar)
(*)出廠設定壓力. Standard Setting.
- ⑤ 油封材質
Seals : N - 丁腈橡膠. Buna N.
V - 氟橡膠. Viton.

插閥尺寸 Dimensions (mm)



• 正轉螺桿, 增加設定壓力
Turn screw clockwise to increase the pressure setting.