

導關閥 Pilot To Close Check Valves.

- 閥系說明：提塞式, 1.96:1 導壓比。
Description : Poppet type, 1.96:1 Pilot ratio.
- 額定流量 Flow rating Q nom. : 200 L/min
- 最高壓力 Max. pressure P max. : 315 bar.
- 插式閥重 Cartridge only weight : X - 0.50 kg.
L - 0.52 kg.

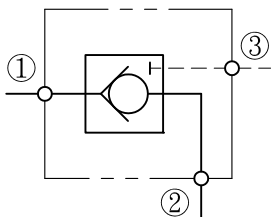
選購型號 Ordering Code

C P O - T 1 7 - X 0.2 N

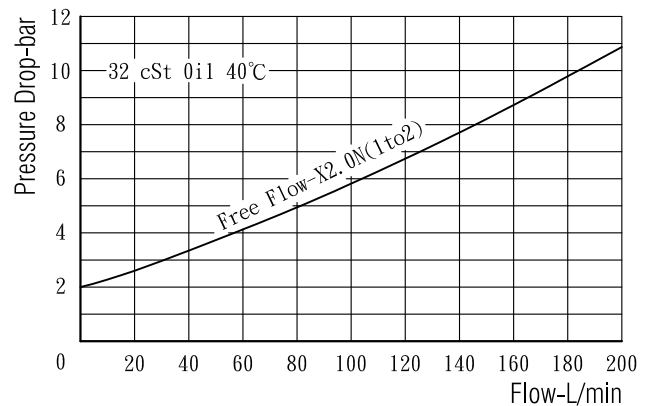
① ② ③ ④ ⑤

- ① 導關閥
Pilot To Close Check Valves.
- ② 閥孔型號
Cavity Size.
- ③ 控制方式 Controls.
X - 標準型. Standard Type.
L - 螺桿調整. Standard Screw Adjustment
- ④ 開閥壓
Cracking Pressure.
0.2 - 0.2 bar.
2.0 - 2.0 bar.
4.0 - 4.0 bar.
7.0 - 7.0 bar.
- ⑤ 油封材質
Seals : N - 丁腈橡膠. Buna N.
V - 氟橡膠. Viton.

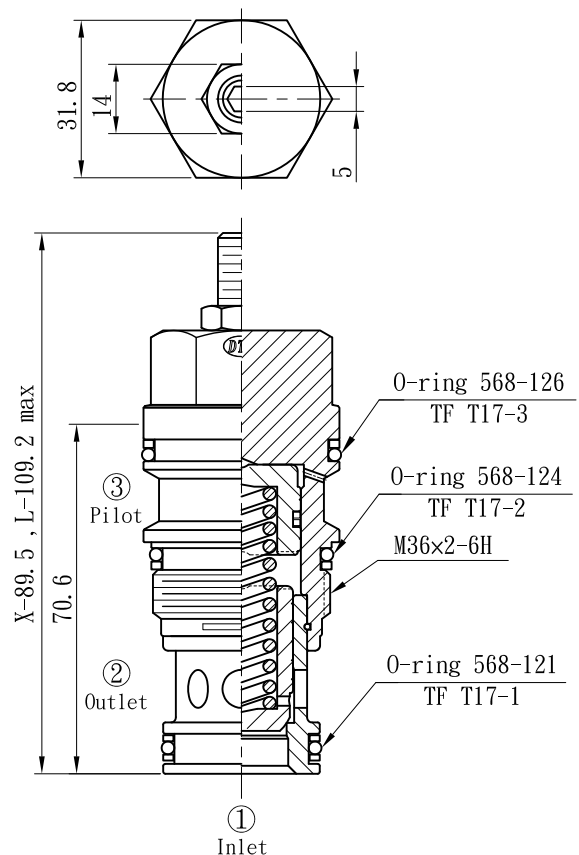
油壓符號 Symbol



壓損曲線 Flow-Pres. Drop Curve



插閥尺寸 Dimensions(mm)



閥孔型號 Valve Cavity : T17

成型刀具 Cavity Tools : CT17-D, CT17-R

※請參閱 See page CT.M