

減洩壓閥 Reducing/Relieving Valves.

- 閥系說明：導壓型，平衡活塞式。
Description : Pilot operated, Balanced spool.
- 額定流量 Flow rating Q_{nom.}: 30 L/min.
- 最高壓力 Max. pressure P_{max.}: 315 bar.
- 插式閥重 Cartridge only weight : K - 0.17 kg.
L - 0.14 kg.

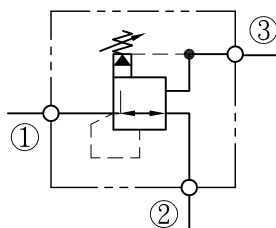
選購型號 Ordering Code

C R R - T 1 1 - L 1 0 N

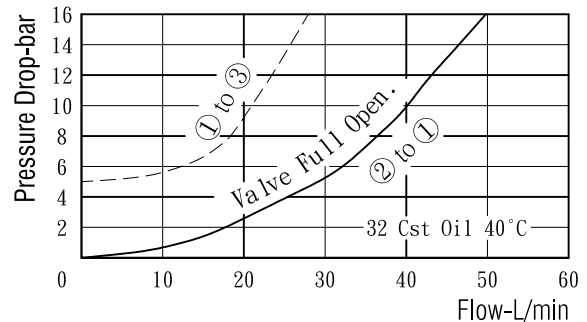
① ② ③ ④ ⑤

- ① 減洩壓閥
Reducing/Relieving Valves.
- ② 閥孔型號
Cavity Size.
- ③ 調整方式 Controls.
L - 螺桿調整, Standard Screw Adjustment
K - 旋鈕調整, Handknob & Locknob Adj.
- ④ 壓力調整範圍
Adjustment Ranges.
10 - 5 to 100 bar. (*10bar)
20 - 7 to 210 bar. (*15bar)
(*)出廠設定壓力, Standard Setting.
- ⑤ 油封材質
Seals : N - 丁腈橡膠, Buna N.
V - 氟橡膠, Viton.

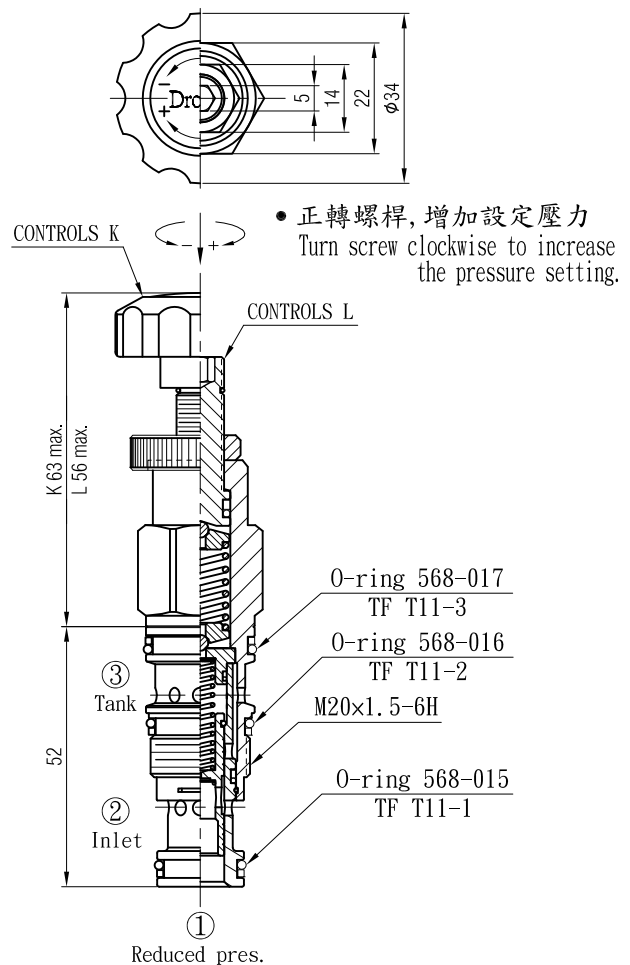
油壓符號 Symbol



壓損曲線 Flow-Pres. Drop Curve



插閥尺寸 Dimensions(mm)



閥孔型號 Valve Cavity : T11A
成型刀具 Cavity Tools : CT11-D, CT11-R

※請參閱 See page CT. K