

## 順序閥 Sequence Valves.

- 閥系說明：導壓型，平衡活塞式。  
Description : Pilot operated, Balanced spool.
- 額定流量 Flow rating  $Q_{nom.} : 100 \text{ L/min.}$
- 最高壓力 Max. pressure  $P_{max.} : 315 \text{ bar.}$
- 插式閥重 Cartridge only weight : K - 0.29 kg.  
L - 0.25 kg.

### 選購型號 Ordering Code

C S V - T 0 2 - L 1 0 N

①                      ②                      ③    ④    ⑤

#### ① 順序閥

Sequence Valves.

#### ② 閥孔型號

Cavity Size.

#### ③ 調整方式 Controls.

L - 螺桿調整. Standard Screw Adjustment  
K - 旋鈕調整. Handknob & Locknob Adj.

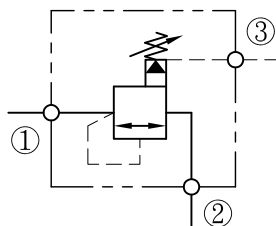
#### ④ 壓力調整範圍

Adjustment Ranges.  
10 - 5 to 100 bar. (\*30bar)  
20 - 7 to 210 bar. (\*70bar)  
30 - 10 to 315 bar. (\*70bar)  
(\* ) 出廠設定壓力. Standard Setting.

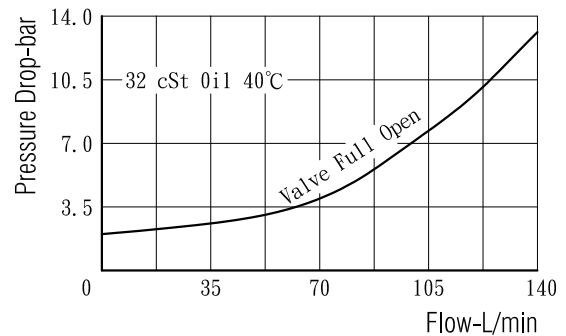
#### ⑤ 油封材質

Seals : N - 丁腈橡膠. Buna N.  
V - 氟橡膠. Viton.

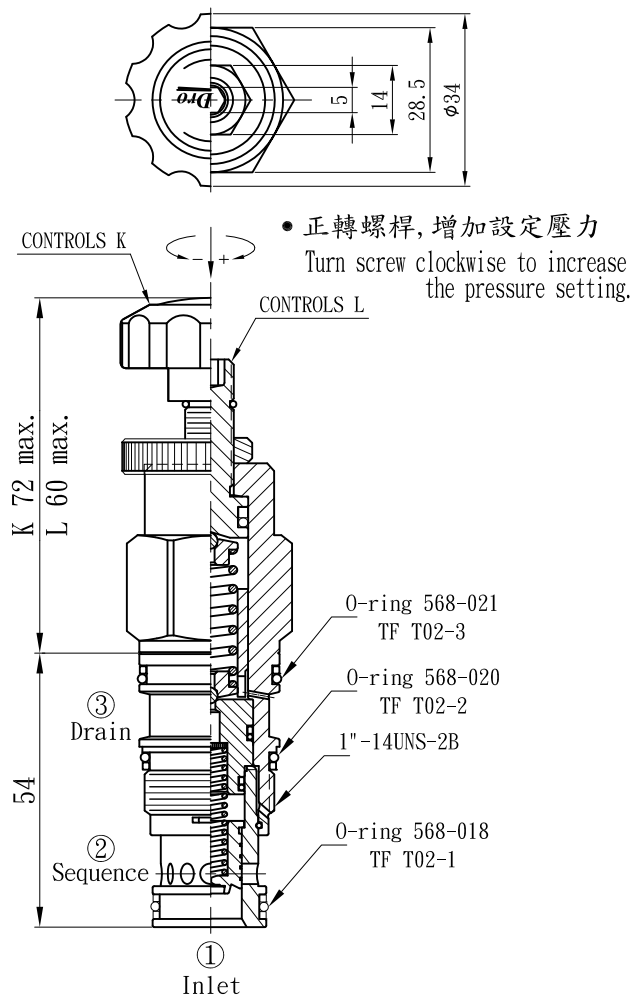
### 油壓符號 Symbol



### 壓損曲線 Flow-Pres. Drop Curve



### 插閥尺寸 Dimensions(mm)



閥孔型號 Valve Cavity : T02

成型刀具 Cavity Tools : CT02-D, CT02-R

※請參閱 See page

CT. L

INDEX