

DMB 油電壓力開關 Pressure Switch



選購型號 / How to order

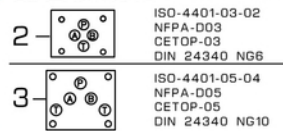
DMB-2P250A-Pi



1 型式 / Model

疊加式 Sandwich Type

2 配合閥規格 / For use with solenoid valves



3 壓力檢出管路 / Pressure Transforms Line

A: A port
B: B port
P: P port
w: A&B port

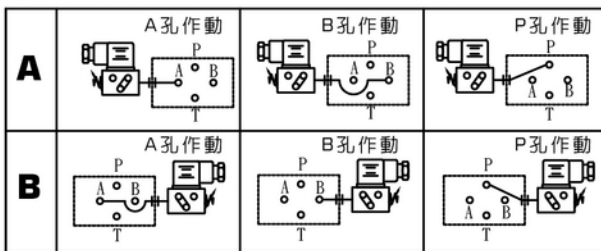
4 壓力範圍 / Pressure Adj. Range

型式 Model	壓力調整範圍 Pressure Adj. Range bar	測定壓力 Set Pres. bar
040K	6 ~ 40	20
070K	8 ~ 70	30
150K	15 ~ 150	70
250K	40 ~ 250	100

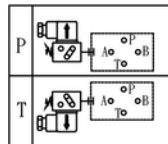
7 B: 無指示燈 / Without indicator LED

i: 附指示燈 / With indicator LED

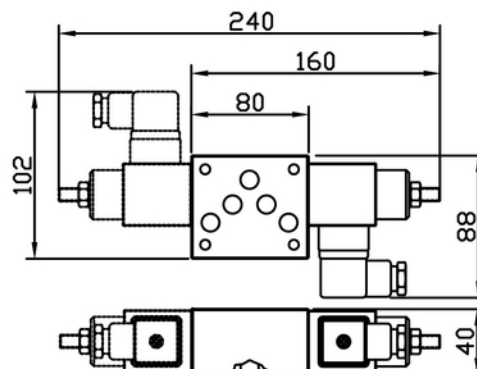
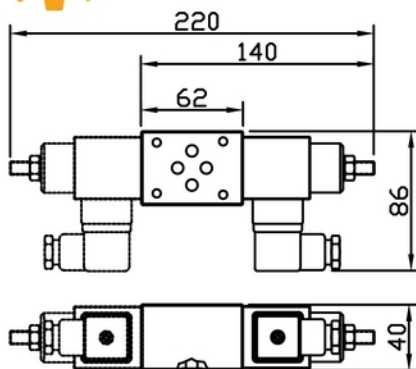
5 調壓向位 / Position of the pressure adj.



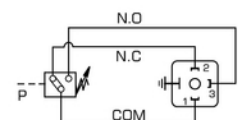
6 電器插頭座位 / Position of the electrical connector



尺寸圖 / Dimension mm(inches)



油電符號表 / Graphic Symbol



N.O.=Normally open
N.C.=Normally close

Rating:

B: 3A 250VAC, 0.5A 30VDC
i: 24VDC, 250VAC < 0.6A



性能圖 / Performance Curves

型式 Model	重量 kg Weight
DMB-02P(A,B)	0.55 Kgs
DMB-02W	0.8 Kgs

For use with ISO 03/CETOP 3/NFPA D03 Standard Solenoid Valves

型式 Model	重量 kg Weight
DMB-03P(A,B)	0.9 Kgs
DMB-03W	1.5 Kgs

For use ISO 05/CETOP 5/NFPA D05 Standard Solenoid Valves

性能圖請參考DNB 系列
See Table DNB Series